



# MONTHLY MEMBERSHIP PROGRESS REPORT

District 9 NW

Results as of: 3/31/2017

GMT: Judy Hankom

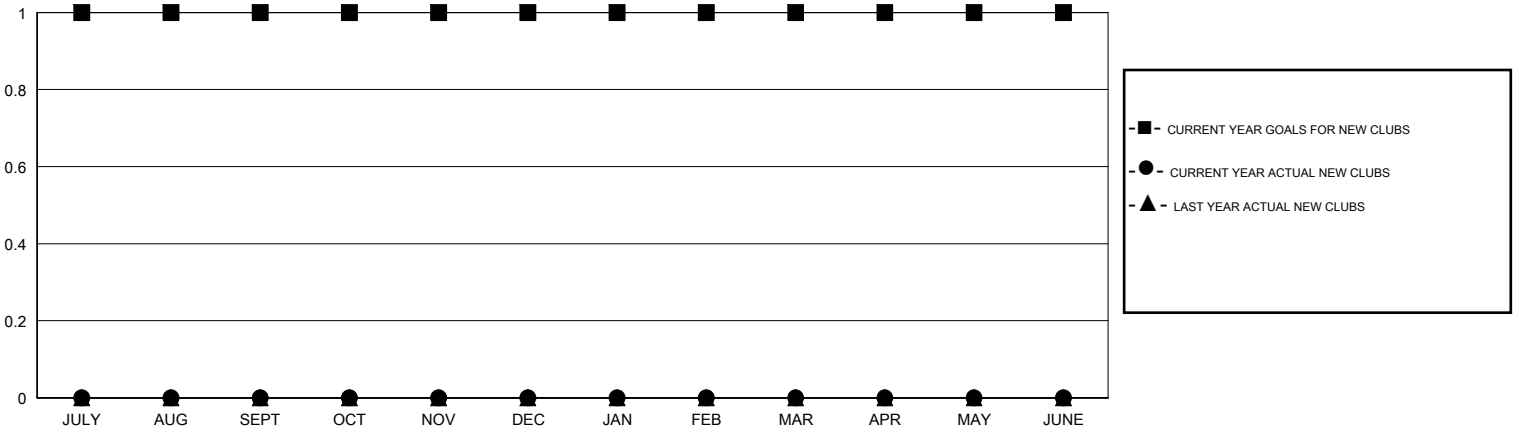
LOCATION IOWA

GMT CA

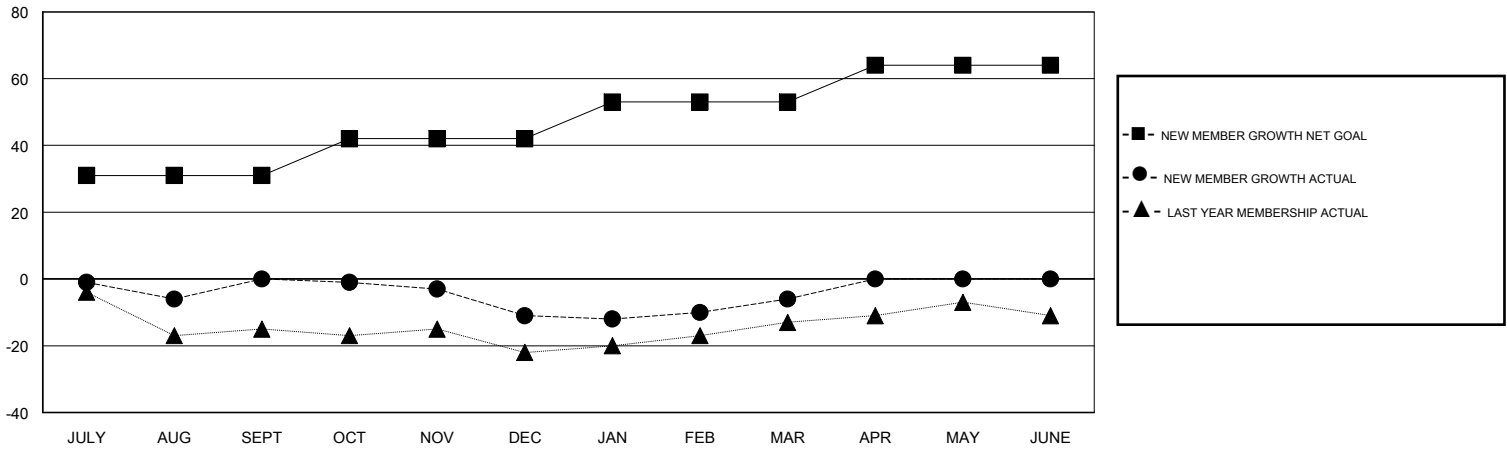
| Clubs                 |               |           |               |
|-----------------------|---------------|-----------|---------------|
| RESULTS FOR 2016-2017 |               |           |               |
| QUARTER               | NEW CLUB GOAL | NEW CLUBS | DROPPED CLUBS |
| JULY/AUG/SEPT         | 1             | 0         | 0             |
| OCT/NOV/DEC           | 0             | 0         | 1             |
| JAN/FEB/MAR           | 0             | 0         | 0             |
| APR/MAY/JUNE          | 0             | 0         | 0             |

| Members               |  |  |  |
|-----------------------|--|--|--|
| RESULTS FOR 2016-2017 |  |  |  |
| QUARTER               | NEW MEMBER GROWTH NET GOAL (not reinstated or transfers) | NEW MEMBER GROWTH ACTUAL (not reinstated or transfers) | DROPPED MEMBERS ACTUAL (including transfers) |
| JULY/AUG/SEPT         | 31   | 20   | 20   |
| OCT/NOV/DEC           | 11   | 12   | 23   |
| JAN/FEB/MAR           | 11   | 26   | 21   |
| APR/MAY/JUNE          | 11   | 0  | 0  |

GOALS AND ACTUAL NEW CLUBS CUMULATIVE



GOALS AND ACTUAL MEMBERS CUMULATIVE



|                  |  |                                 |              |
|------------------|--|---------------------------------|--------------|
| DROPPED CLUBS: 1 | 22 CLUBS OF 44 ADDED 1 OR MORE NEW MEMBERS | <u>GENDER DISTRIBUTION</u>      |              |
| DROPPED MEMBERS  |  | MALE                            | 778 (80.62%) |
| DECEASED         | 10   | FEMALE                          | 187 (19.38%) |
| CLUB CANCELLED   | 2  | TOTAL FAMILY UNIT MEMBERS       | 120          |
| OTHER            | 52   | FAMILY MEMBERS PAYING HALF DUES | 60           |
| TOTAL            | 64   |                                 |              |

[CLICK HERE FOR CUMULATIVE MEMBERSHIP DATA](#)